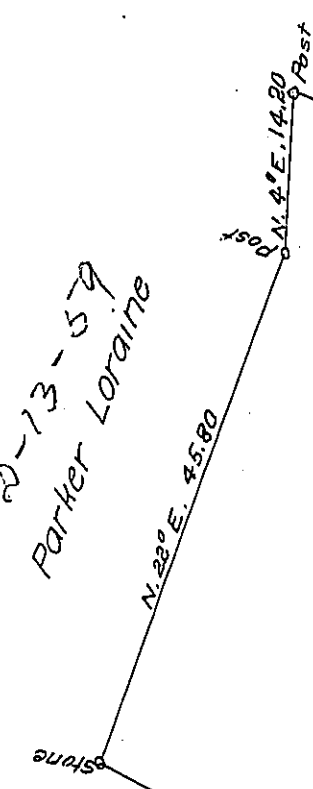


2-13-59  
Parker Loraine



Bedford County  
W<sup>m</sup> Williams  
12<sup>a</sup> 12<sup>ps</sup> & ce.

✓

Patented 27<sup>th</sup> May 1868  
to William Williams

Excess paid & accepted 27<sup>th</sup> May 1868  
651.

Draft of a T.  
May 25<sup>th</sup> 1868.  
Robinson Tp. da

IN TESTIMO